

Danyang Winpower Wire and Cable Mfg Co., Ltd



Website

<https://www.whxcable.com/>
<https://pv-cable-supplier.com/>



Tel

Tel / WhatsApp: +86 18921569300



Email

wade@winpowercable.com



Factory Add

Lingkou Industrial Park, Lingkou Town, Danyang City, Zhenjiang City, Jiangsu,
141100 China



About Us

—— about Us ——

Danyang Winpower Wire and Cable Mfg Co., Ltd. is a high-tech enterprise specializing in the research and development and production of new energy vehicle charging pile products. The company has an experienced professional technical team, a sound management system and a perfect quality system. It integrates product design and development, manufacturing, sales and service integrated management system to ensure the excellent performance and quality of the products.

We mainly produce various types of adapters, as well as Ac portable charging guns and charging piles of American, European, national and Tesla standards. With rich cross-border experience, our products are exported to North America, Europe, the Middle East and Southeast Asian countries, and we supply independent station sellers of multiple cross-border e-commerce platforms (amazon, aliexpress, ozon). At present, we have 50+ product patent certificates and ISO9001, IATF16949 qualifications/certifications.

With excellent quality, reasonable price and perfect pre-sales and after-sales services, our products are well received by customers at home and abroad and trusted by many well-known companies. Adhering to the tenet of "customer first, quality first", we are constantly innovating and keeping pace with the times. We are willing to work with new and old customers to create a better future.

01



Long-term warranty



ODM & OEM Available



13 years of experience



7X24 hours online service

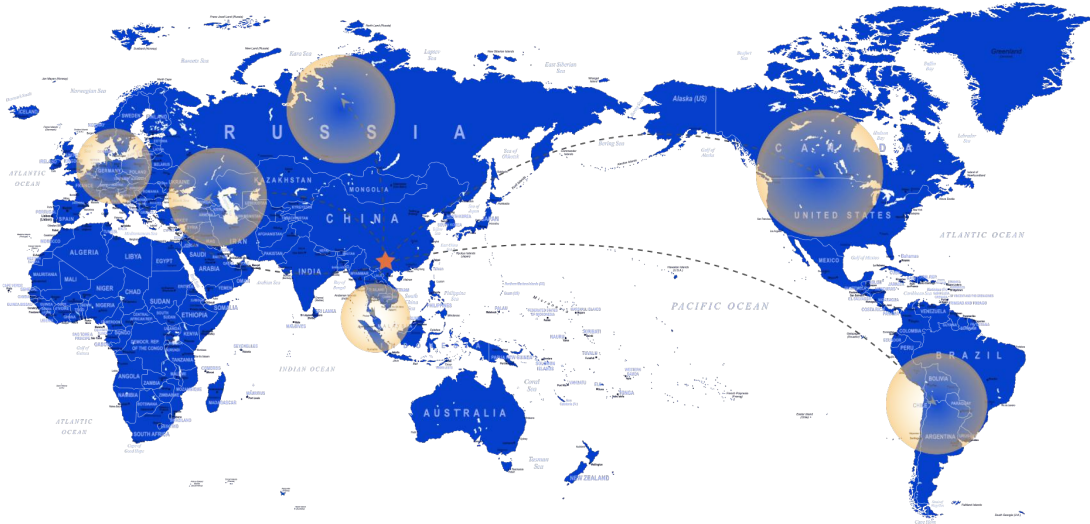


Complete certificate



market

02



Since 2011, our electric vehicle charging solutions have helped thousands of forward-thinking businesses around the world enter the electric vehicle industry and realize their Goal By 2020, our customers and partners will help us install one million charging ports, making transportation simpler and more convenient.



Participate in exhibitions

Honors and Qualifications

ADVANTAGE

Product Catalog

03

04



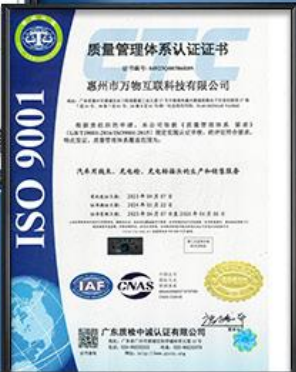
TUV certificate



CE certificate



FCC-Certificate



ISO 9001 Certificate



16949 Certificate



- 01 Company Introduction
- 02 Participate in exhibitions
- 03 Honors and Qualifications
- 04 Table of contents
- 05 ~ 14 New energy vehicle adapter series
- 15 ~ 17 New energy appliance series
- 18 ~ 22 Extension cord series
- 23 ~ 24 Charging cable series
- 25 ~ 30 Charging Gun Cable Series



Best selling adapter

01

New energy vehicle adapter series
EV CHARGING ADAPTERS SERIES



Applicable to all GBT new energy electric vehicles



BYD



吉利汽车



广汽集团
GAC GROUP



东风汽车
DONGFENG MOTOR



BMW



上汽大众
SAIC VOLKSWAGEN



北汽汽车



XPENG



CHERY



长安汽车
CHANGAN AUTO



AITO



理想



蔚来



European standard to GBT standard charging adapter

Type: CCS2-GBT Adapter

Main markets: Europe, Middle East, Southeast Asia

Rated current: 250A Max

Rated voltage: 1000VDC Max Waterproof

grade: IP54 (after mating)

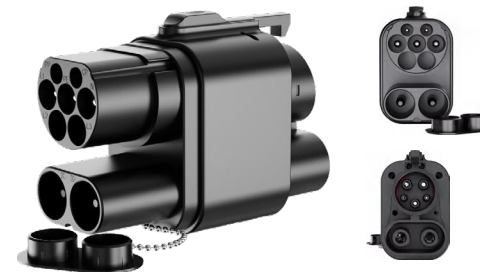
Housing: Thermoplastic plastic

Conductor: Copper alloy, silver plated

Working environment temperature: -30°C ~ +50°C

Product Net Weight: 1.63kg

Product Dimensions: 294.38*95.48*145.39mm



European standard to American standard DC/AC charging adapter

Type: CCS2-CCS1 (DC+AC) Adapter

Main market: Europe

Rated current: 250A DC/80A AC

Rated voltage: 1000V DC/250V AC

Waterproof grade: IP54 (after mating)

Housing: Thermoplastic plastic

Conductor: Copper alloy, silver plated

Working environment temperature: -30°C ~ +50°C

Product Net Weight: 0.77kg

Product Dimensions: 149.85*18.25*109.23mm



European standard to Japanese standard charging adapter

Type: CCS2-CHAdeMO Adapter

Main markets: Europe, Middle East, Southeast Asia

Rated current: 250A Max

Rated voltage: 1000VDC Max Waterproof

grade: IP54 (after mating)

Housing: Thermoplastic plastic

Conductor: Copper alloy, silver plated

Working environment temperature: -30°C ~ +50°C

Product Net Weight: 1.63kg

Product size: 294.38*95.48*145.39mm



European standard to American standard DC charging adapter

Type: CCS2-CCS1 (DC) Adapter

Main market: Europe

Rated current: 250ADC

Rated voltage: 1000VDC

Waterproof grade: IP54 (after mating)

Housing: Thermoplastic plastic

Conductor: Copper alloy, silver plated

Working environment temperature: -30°C ~ +50°C

Product Net Weight: 0.65kg

Product Dimensions: 149.85*18.25*109.23mm

06

New energy vehicle adapter series



European standard to national standard single-phase/three-phase charging adapter

Type: TYPE2-GBT(1/3PHASE)Adapter

Main market: Europe

Rated current: 32A Max
 Rated voltage: 250VAC
 Waterproof grade: IP54(after mating)
 Housing: Thermoplastic plastic
 Conductor: Copper alloy, silver plated
 Working environment temperature: -30°C~+50°C
 Product Net Weight: 0.35kg
 Product size: 172.54*64.69*74.82mm



European standard DC to Type2

Type: CCS2-TYPE2 Adapter

Main market: Europe

Rated current: 210A Max
 Rated voltage: 410VDC
 Waterproof grade: IP54(after mating)
 Housing: Thermoplastic plastic
 Conductor: Copper alloy, silver plated
 Working environment temperature: -30°C~+50°C
 Product Net Weight: 0.71kg
 Product size: 135.23*67.05*98.08mm



European standard to Tesla DC charging adapter

Type: Type2 -NACS Supercharger

Main markets: Eastern Europe, Southeast Asia, South America

Rated current: 200A
 Rated voltage: 500VAC
 Waterproof grade: IP54(after mating)
 Housing: Thermoplastic plastic
 Conductor: Copper alloy, silver plated
 Working environment temperature: -30°C~+50°C
 Product Net Weight: 0.37kg
 Product size: 119.9*62.5*62.5mm



European standard to Tesla AC charging adapter

Type: Type2-NACS AC Adapter

Main markets: Eastern Europe, Southeast Asia, South America

Rated current: 80A
 Rated voltage: 110-250VAC
 Waterproof grade: IP54(after mating)
 Housing: Thermoplastic plastic
 Conductor: Copper alloy, silver plated
 Working environment temperature: -30°C~+50°C
 Product Net Weight: 0.34kg
 Product size: 119.9*62.5*62.5mm



European standard to American standard charging adapter

Type: TYPE2-J1772 Adapter

Main market: Eastern Europe

Rated current: 32A Max
 Rated voltage: 250V AC
 Waterproof grade: IP54(after mating)
 Housing: Thermoplastic plastic
 Conductor: Copper alloy, silver plated
 Working environment temperature: -30°C~+50°C
 Product Net Weight: 0.35kg
 Product Dimensions: 172.54*64.69*74.82mm



European standard to Tesla DC charging adapter

Type: Switch type CCS2-NACS DC Adapter

Main markets: Eastern Europe, Russia

Rated current: 250ADC
 Rated voltage: 1000VAC
 Waterproof grade: IP54 (after mating)
 Housing: Thermoplastic plastic
 Conductor: Copper alloy, silver plated
 Working environment temperature: -30°C~+50°C
 Product Net Weight: 0.74kg
 Product size: 50.15*69.6*100.22mm



European standard to Tesla AC/DC charging adapter

Type: CCS2-NACS (DC+AC)Adapter

Main markets: Eastern Europe, Russia

Rated current: 250A DC/80A AC
 Rated voltage: 1000V DC/250V AC
 Waterproof grade: IP54(after mating)
 Housing: Thermoplastic plastic
 Conductor: Copper alloy, silver plated
 Working environment temperature: -30°C~+50°C
 Product Net Weight: 0.78kg
 Product size: 150.15*69.6*100.22mm



US standard to Japanese standard charging adapter

Type: CCS1 -CHAdeMO Adapter

Main markets: North America, South America

Rated current: 250A Max
 Rated voltage: 1000VDC Max
 Waterproof grade: IP64 (after mating)
 Housing: Thermoplastic plastic
 Conductor: Copper alloy, silver plated
 Working environment temperature: -30°C ~ +50°C
 Product Net Weight: 1.80kg
 Product size: 289*95.37*150.85mm



US to European DC/AC charging adapter

Type: CCS1-CCS2 (DC+AC) Adapter

Main market: North America

Rated current: 250ADC/63AAC
 Rated voltage: 1000VDC/240VAC
 Waterproof grade: IP54 (after mating)
 Housing: Thermoplastic plastic
 Conductor: Copper alloy, silver plated
 Working environment temperature: -30°C ~ +50°C
 Product Net Weight: 0.6kg
 Product Dimensions: 112.9*69.6*100.22mm



US standard to national standard charging adapter

Type: CCS1-GBT Adapter

Main markets: Mexico, North America

Rated current: 250A Max
 Rated voltage: 1000VDC Max
 Waterproof grade: IP55 (after mating)
 Housing: Thermoplastic plastic
 Conductor: Copper alloy, silver plated
 Working environment temperature: -30°C ~ +50°C
 Product Net Weight: 1.58kg
 Product size: 282.18*95.48*143.81mm



US standard to European standard DC charging adapter

Type: CCS1-CCS2 (DC) Adapter

Main market: North America

Rated current: 200ADC
 Rated voltage: 1000VDC
 Waterproof grade: IP54 (after mating)
 Housing: Thermoplastic plastic
 Conductor: Copper alloy, silver plated
 Working environment temperature: -30°C ~ +50°C
 Product Net Weight: 0.8kg
 Product Dimensions: 137.39*79.5*122.93mm



US standard to national standard charging adapter

Type: J1772 -GBT Adapter

Main markets: Mexico, South America, Africa, One Belt One Road countries

Rated current: 32A Max
 Rated voltage: 240VAC
 Waterproof grade: IP54 (after mating)
 Housing: Thermoplastic plastic
 Conductor: Copper alloy, silver plated
 Working environment temperature: -30°C ~ +50°C
 Product Net Weight: 0.33kg
 Product size: 165.55*56mm



US standard to Tesla DC/AC charging adapter

Type: CCS1-NACS Adapter (DC+AC)

Main markets: North America, Southeast Asia

Rated current: 250DC/80AAC
 Rated voltage: 1000V DC/240V AC
 Waterproof grade: IP54 (after mating)
 Housing: Thermoplastic plastic
 Conductor: Copper alloy, silver plated
 Working environment temperature: -30°C ~ +50°C
 Product Net Weight: 0.8kg
 Product Dimensions: 137.39*79.5*122.93mm



US standard to Tesla charging adapter

Type: J1772 -NACS Adapter

Main markets: Europe, North America

Rated current: 80A
 Rated voltage: 240VAC
 Waterproof grade: IP54 (after mating)
 Housing: Thermoplastic plastic
 Conductor: Copper alloy, silver plated
 Working environment temperature: -30°C ~ +50°C
 Product Net Weight: 0.33kg
 Product size: 87.4*50.96*60.76mm

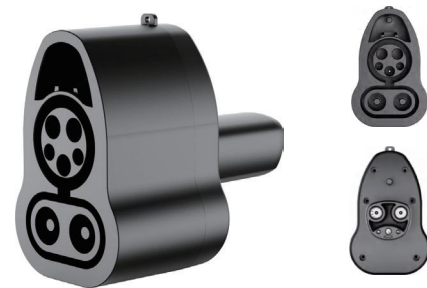


US to European charging adapter

Type: J1772 -TYPE2 Adapter

Main markets: North America, Europe

Rated current: 32A
 Rated voltage: 250VAC
 Waterproof grade: IP54 (after mating)
 Housing: Thermoplastic plastic
 Conductor: Copper alloy, silver plated
 Working environment temperature: -30°C ~ +50°C
 Product Net Weight: 0.36kg
 Product Dimensions: 164.4*69.03mm



US standard to Tesla upgraded charging adapter

Type: Upgraded CCS1-NACS Adapter

Main market: North America

Rated current: 250ADC

Rated voltage: 1000VDC

Waterproof grade: IP54(after mating)

Housing: Thermoplastic plastic

Conductor: Copper alloy, silver plated

Working environment temperature: -30°C~+50°C

Product Net Weight: 0.71kg

Product size: 137.39*79.5*122.93mm



Tesla to US standard charging adapter

Type: Classic NACS-J1772

Adapter Main market: North America

Rated current: 80AMax

Rated voltage: 240VDCMax

Waterproof grade: IP54(after mating)

Housing: Thermoplastic plastic

Conductor: Copper alloy, silver plated

Working environment temperature: -30°C~+50°C

Product Net Weight: 0.43kg

Product size: 127.7*55*77.21mm



Tesla to European standard charging adapter

Type: NACS-Type2 Adapter

Main market: Europe

Rated current: 63A

Rated voltage: 250VAC

Waterproof grade: IP54(after mating)

Housing: Thermoplastic plastic

Conductor: Copper alloy, silver plated

Working environment temperature: -30°C~+50°C

Product Net Weight: 0.41kg

Product size: 222.37*69.5*87.38mm



Tesla to US standard charging adapter without lock

Type: NACS-J1772 Adapter without locking buckle

Main market: North America

Rated current: 80AMax

Rated voltage: 240VDCMax

Waterproof grade: IP54(after mating)

Housing: Thermoplastic plastic

Conductor: Copper alloy, silver plated

Working environment temperature: -30°C~+50°C

Product Net Weight: 0.35kg

Product size: 125.7*55*75.1mm



Tesla to national standard charging adapter

Type: NACS-GBT AC Adapter
Main markets: Asia, Southeast Asia
Rated current: 80A Max
Rated voltage: 240VDC Max
Waterproof grade: IP54 (after mating)
Housing: Thermoplastic plastic
Conductor: Copper alloy, silver plated
Working environment temperature: -30°C ~ +50°C
Product Net Weight: 0.33kg
Product size: 113.2*56.09*70.93mm



Tesla to European standard DC charging adapter

Type: NACS-CCS2 DC Adapter
Main Market: Europe
Rated current: 200ADC
Rated voltage: 1000VDC
Waterproof grade: IP54 (after mating)
Housing: Thermoplastic plastic
Conductor: Copper alloy, silver plated
Working environment temperature: -30°C ~ +50°C
Product Net Weight: 0.86kg
Product size: 152.2*69.3*100.3mm



National standard to European standard charging adapter

Type: GBT-CCS2 Adapter
Main market: Asia
Rated current: 250A Max
Rated voltage: 1000VDC Max
Waterproof grade: IP54 (after mating)
Housing: Thermoplastic plastic
Conductor: Copper alloy, silver plated
Working environment temperature: -30°C ~ +50°C
Product Net Weight: 1.51kg
Product size: 290.5*96*147.26mm



GBT to CCS1 charging adapter

Type: GBT-CCS1 Adapter
Main Market: Europe
Rated current: 250A Max
Rated voltage: 1000VDC Max
Waterproof grade: IP54 (after mating)
Housing: Thermoplastic plastic
Conductor: Copper alloy, silver plated
Working environment temperature: -30°C ~ +50°C
Product Net Weight: 1.33kg
Size: 283.86*94.98*153.27mm



Tesla to US standard charging adapter (1.0 version)

Type: NACS-CCS Adapter
Main market: North America
Rated current: 250ADC
Rated voltage: 1000VDC
Waterproof grade: IP55 (after mating)
Housing: Thermoplastic plastic
Conductor: Copper alloy, silver plated
Working environment temperature: -30°C ~ +50°C
Product Net Weight: 0.75kg
Product size: 126.4*70.1*11.67mm



Tesla to US standard charging adapter (3.0 version)

Type: NACS-CCS1 Adapter
Main market: North America
Rated current: 250ADC
Rated voltage: 1000VDC
Waterproof grade: IP67 (after mating)
Housing: Thermoplastic plastic
Conductor: Copper alloy, silver plated
Working environment temperature: -30°C ~ +50°C
Product size: 126.4*70.1*101.67mm



GBT to J1772 charging adapter

Type: GBT-J1772 Adapter
Main market: Asia
Rated current: 32A Max
Rated voltage: 220VAC
Waterproof grade: IP54 (after mating)
Housing: Thermoplastic plastic
Conductor: Copper alloy, silver plated
Working environment temperature: -30°C ~ +50°C
Product Net Weight: 0.49kg
Product size: 176*69.5*62.65mm



National standard to European standard charging adapter (single phase/three phase)

Type: GBT-Type2 Adapter
Main market: Asia
Rated current: 32A Max
Rated voltage: 220VAC
Waterproof grade: IP54 (after mating)
Housing: Thermoplastic plastic
Conductor: Copper alloy, silver plated
Working environment temperature: -30°C ~ +50°C
Product Net Weight: 0.49kg
Product size: 176*69.5*62.65mm



National standard electrical appliance

Type: GBT V2L

Main market: Asia
 Rated current: 16A Max Rated
 voltage: 220VAC Max
 Waterproof grade: IP54(after mating)
 Shell: Thermoplastic plastic
 Conductor: Copper alloy, silver-plated
 Working temperature: -30°C~+50°C
 Product Net Weight: 0.28kg
 Dimensions: 139.62*57.5*77.59mm



National standard electrical appliance

Type: TYPE2 V2L

Main market: EUR
 Rated current: 16A Max Rated
 voltage: 220VAC Max
 Waterproof grade: IP54(after mating)
 Shell: Thermoplastic plastic
 Conductor: Copper alloy, silver-plated
 Working temperature: -30°C~+50°C
 Product Net Weight: 0.28kg
 Dimensions: 139.62*57.5*77.59mm



National standard electrical appliance

Type: J1772 V2L

Main market: USA
 Rated current: 20A Max Rated
 voltage: 125VAC Max
 Waterproof grade: IP54(after mating)
 Shell: Thermoplastic plastic
 Conductor: Copper alloy, silver-plated
 Working temperature: -30°C~+50°C
 Product Net Weight: 0.28kg
 Dimensions: 139.62*57.5*77.59mm



American standard V2L with socket

Type: American standard plug-in extension line

Rated current: 20A Rated

voltage: 220VAC Contact

impedance: 0.5mΩ Max Plastic shell

fireproof grade: UL94V-O Mechanical life:

No-oad plugging and unplugging >10000

Waterproof grade: IP54(after plugging)

Shell: Thermoplastic plastic

Conductor: Copper alloy, silver-plated

surface Working environment temperature: -30°C~+50°C

Terminal temperature rise: <50K

Coupling plugging and unplugging force: <100N



GBT standard V2L with socket

Type: National standard plug-in extension line

Rated current: 16A

Rated voltage: 220VAC

Contact impedance: 0.5mΩ Max

Fire rating of plastic shell: UL94V-O

Mechanical life: no-oad plugging and unplugging 10000

Waterproof grade: IP55 (after plugging)

Housing: Thermoplastic

Conductor: Copper alloy, silver plated

Working environment temperature: -30°C~+50°C

Terminal temperature rise: <50K

Coupling insertion force: <100N



European standard V2L with socket

Type:European standard plug-in extension line

- Rated current: 16A Rated
- voltage: 220VAC Contact
- impedance:0.5m,Max Plastic shell
- fireproof grade: UL94V-O Mechanical life:
- No-load plugging and unplugging>10000
- Waterproof grade: IP55 (after plugging)
- Shell: Thermoplastic plastic
- Conductor: Copper alloy, silver-plated
- surface Working environment temperature: -30°C~+50°C
- Terminal temperature rise: <50K
- Coupling plugging and unplugging force: <100N

Cable length 5





National standard extension cord

Type:GBT Extension Cable

Rated current: 32A/40A

Rated voltage: 220VAC

Contact impedance:0.5 mΩ Max

Fire rating of plastic shell: UL94V-O

Mechanical life: no-oad plugging and unplugging>10000

Waterproof grade: IP68 (after plugging)

Housing: Thermoplastic

Conductor: Copper alloy, silver plated

Working environment temperature: -30°C~+50°C

Finished product size (mm):3500 ± 100

European standard extension cord (single phase/three phase)

Type:TYPE2 Extension Cord (1 phase/3 phase)

Rated current: 32A/40A

Rated voltage: 220VAC

Contact impedance:0.5 mΩ Max

Fire rating of plastic shell: UL94V-O

Mechanical life: no-oad plugging and unplugging>10000

Waterproof grade: IP68 (after plugging)

Housing: Thermoplastic

Conductor: Copper alloy, silver plated

Working environment temperature: -30°C~+50°C

Finished product size (mm): 3500 ± 100



American standard extension cord

Type: J1772 Extension Cable

Rated current: 16A/32A/48A/80A

Rated voltage: 240VAC

Contact impedance:0.5 mΩ Max

Fire rating of plastic shell: UL94V-O

Mechanical life: no-oad plugging and unplugging>10000

Waterproof grade: IP55 (after plugging)

Housing: Thermoplastic

Conductor: Copper alloy, silver plated

Working environment temperature: -30°C~+50°C

Finished product size (mm):5000 ± 100



Tesla extension cord

Type: NACS Extension Cable

Rated current:16A/32A/48A/80A

Rated voltage: 500VAC

Contact impedance:0.5 mΩ Max

Fire rating of plastic shell: UL94V-O

Mechanical life:no-oad plugging and unplugging>10000

Waterproof grade: IP55 (after plugging)

Housing: Thermoplastic

Conductor: Copper alloy, silver plated

Working environment temperature: -40°C~+80°C

Finished product size (mm):5000 ± 100





European standard to American standard AC end extension cable

Type: Type2-J1772 Extension Cord

Rated current: 32A

Rated voltage: 250VAC

Contact impedance: 0.5 mΩ Max

Fire rating of plastic shell: UL94V-O

Mechanical life: no-oad plugging and unplugging >10000

Waterproof grade: IP54 (after plugging)

Housing: Thermoplastic

Conductor: Copper alloy, silver plated

Working environment temperature: -30°C ~ +50°C

Finished product size (mm): 5000 ± 100



European standard to Tesla AC extension cable

Type: Type2-NACS Extension Cord

Rated current: 32A

Rated voltage: 250VAC

Contact impedance: 0.5 mΩ Max

Fire rating of plastic shell: UL94V-O

Mechanical life: no-oad plugging and unplugging >10000

Waterproof grade: IP54 (after plugging)

Housing: Thermoplastic

Conductor: Copper alloy, silver plated

Working environment temperature: -30°C ~ +50°C

Finished product size (mm): 5000 ± 100



American standard to Tesla AC extension cable

Type: J1772-NACS Extension cord

Rated current: 16A/32A/48A/80A

Rated voltage: 240VAC

Contact impedance: 0.5 mΩ Max

Fire rating of plastic shell: UL94V-O

Mechanical life: no-oad plugging and unplugging >10000

Waterproof grade: IP55 (after plugging)

Housing: Thermoplastic

Conductor: Copper alloy, silver plated

Working environment temperature: -40°C ~ +80°C

Finished product size (mm): 5000 ± 100



European standard to national standard AC end extension cable

Type: Type2-GBT Extension cord

Rated current: 32A

Rated voltage: 240VAC

Contact impedance: 0.5 mΩ Max

Fire rating of plastic shell: UL94V-O

Mechanical life: no-oad plugging and unplugging >10000

Waterproof grade: IP55 (after plugging)

Housing: Thermoplastic

Conductor: Copper alloy, silver plated

Working environment temperature: -40°C ~ +80°C

Finished product size (mm): 5000 ± 100



European standard charging cable (single phase/three phase)

Type: Type2 Charger Cable(3 phase/1phase)

Rated current: 32A

Rated voltage: 250VAC

Contact impedance: 0.5 mΩ Max

Fire rating of plastic shell: UL94V-O

Mechanical life: no-oad plugging and unplugging >10000

Waterproof grade: IP54 (after plugging)

Housing: Thermoplastic

Conductor: Copper alloy, silver plated

Working environment temperature: -30°C~+50°C

Finished product size (mm): 5000 ± 100

European standard to national standard AC charging cable

Type: Type2-GBT Charger Cable

Rated current: 32A

Rated voltage: 250VAC

Contact impedance: 0.5 mΩ Max

Fire rating of plastic shell: UL94V-O

Mechanical life: no-oad plugging and unplugging >10000

Waterproof grade: IP54 (after plugging)

Housing: Thermoplastic

Conductor: Copper alloy, silver plated

Working environment temperature: -30°C~+50°C

Finished product size (mm): 5000 ± 100



European standard to Tesla AC charging cable

Type: Type2-NACS Charger Cable

Rated current: 32A

Rated voltage: 250VAC

Contact impedance: 0.5 mΩ Max

Fire rating of plastic shell: UL94V-O

Mechanical life: no-oad plugging and unplugging >10000

Waterproof grade: IP55 (after plugging)

Housing: Thermoplastic

Conductor: Copper alloy, silver plated

Working environment temperature: -40°C~+80°C

Finished product size (mm): 5000 ± 100



European standard to American standard AC charging cable

Type: Type2-J1772 Charger Cable

Rated current: 32A

Rated voltage: 250VAC

Contact impedance: 0.5 mΩ Max

Fire rating of plastic shell: UL94V-O

Mechanical life: no-oad plugging and unplugging >10000

Waterproof grade: IP55 (after plugging)

Housing: Thermoplastic

Conductor: Copper alloy, silver plated

Working environment temperature: -40°C~+80°C

Finished product size (mm): 5000 ± 100



American standard AC charging cable

Type: J1772AC Charger with Cable(16A-80A)

Rated current: 16A-80A

Rated voltage: 240VAC

Contact impedance: 0.5 mΩ Max

Fire rating of plastic shell: UL94V-O

Mechanical life: no-load plugging and unplugging >10000

Waterproof grade: IP54 (after plugging)

Housing: Thermoplastic

Conductor: Copper alloy, silver plated

Working environment temperature: -30°C ~ +50°C

Wire length: 6m ± 100mm



National standard AC charging cable

Type: GBT AC Charger With Cable

Rated current: 16A-63A Rated

voltage: 220VAC Contact

impedance: 0.5 mΩ Max

Shell fire rating: UL94V-O Mechanical life: No-load

plugging >10000

Waterproof grade: IP55 (after mating)

Shell: Thermoplastic plastic

Conductor: Copper alloy, silver-plated

surface Working temperature: -30°C ~ +50°C

Wire length: 6m ± 100mm



Tesla charging gun cable

Type: NACS Charger with Cable(16A-80A)

Rated current: 16A-80A

Rated voltage: 240VAC

Contact impedance: 0.5 mΩ Max

Fire rating of plastic shell: UL94V-O

Mechanical life: no-load plugging and unplugging >10000

Waterproof grade: IP55 (after plugging)

Housing: Thermoplastic

Conductor: Copper alloy, silver plated

Working environment temperature: -40°C ~ +80°C

Wire length: 5m ± 100mm



European standard AC charging cable

Type: Type2 AC Charger with Cable

Rated current: 16A-63A Rated

voltage: 250VAC Contact

impedance: 0.5 mΩ Max

rating: UL94V-O

Mechanical life: No-load plugging >10000

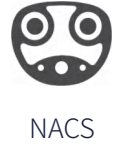
Waterproof grade: IP54 (after mating)

Shell: Thermoplastic plastic

Conductor: Copper alloy, silver-plated

Working temperature: -30°C ~ +50°C

Wire length: 5m ± 100mm



Tesla DC charging cable

Type: NACS DC Charging Cable

- Rated current: 250A (large DC)
- Insulation resistance: $\geq 1000\text{m}\Omega$, DC 1000V
- Plugging life: ≥ 10000 times
- Insertion force: $\leq 10\text{ON}$
- Working temperature: $-30^{\circ}\text{C} \sim +50^{\circ}\text{C}$
- Protection level: IP67



American standard DC charging cable

Type: CCS2 Dc Charger Cable

- Rated current: 250A Max
- Rated voltage: 1000VDC
- Contact impedance: $0.5\text{ m}\Omega$ Max
- Fire rating of plastic shell: UL94V-0
- Mechanical life: no-oad plugging and unplugging > 10000
- Waterproof grade: IP55 (after plugging)
- Housing: Thermoplastic
- Conductor: Copper alloy, silver plated
- Working environment temperature: $-30^{\circ}\text{C} \sim +50^{\circ}\text{C}$
- Wire length: $5\text{m} \pm 100\text{mm}$



Tesla female charging cable

Type: NACS female Charging Cable

- Rated current: 16-80A
- Insulation resistance: $\geq 100\text{m}\Omega$, 500V DC
- Holding force: Pull-off force after main line terminal and cable riveting: $\geq 45\text{ON}$
- Plugging life: ≥ 10000 times
- Insertion force: $\leq 10\text{ON}$
- Working temperature: $-40^{\circ}\text{C} \sim +80^{\circ}\text{C}$
- Protection level: IP65



European standard DC charging cable

Type: CCS2 DC Charger Cable

- Rated current: 250ADC
- Rated voltage: 1000VDC
- Contact impedance: $0.5\text{ m}\Omega$ Max
- Fire rating of plastic shell: UL94V-0
- Mechanical life: no-oad plugging and unplugging > 10000
- Waterproof grade: IP54 (after plugging)
- Housing: Thermoplastic
- Conductor: Copper alloy, silver plated
- Working environment temperature: $-30^{\circ}\text{C} \sim +50^{\circ}\text{C}$
- Wire length: $5\text{m} \pm 20\text{mm}$





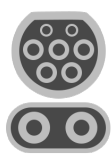



GBT

National standard DC charging cable

- Type: GBT DC Charger Cable
- Rated current: 250A Max
 - Rated voltage: 1000VDC
 - Contact impedance: 0.5 mΩ Max
 - Fire rating of plastic shell: UL94V-O
 - Mechanical life: no-load plugging and unplugging > 10000
 - Waterproof grade: IP55 (after plugging)
 - Housing: Thermoplastic
 - Conductor: Copper alloy, silver plated
 - Working environment temperature: -30°C ~ +50°C
 - Wire length: 5m ± 100mm

Five charging standards and charging ports

	American Standard	Japanese Standard	European Standard	National Standard	Tesla
Alternating current (AC)	 J1772 (Type 1)	 J1772 (Type 1)	 (Type 2)	 GBT	 NACS
Direct current (DC)	 CCS1	 CHAdeMo	 CCS2	 GBT	



CHAdeMo

Japanese standard DC charging cable

- Type: CHAdeMO DC Charger Cable
- Rated current: 150A Max
 - Rated voltage: 500VDC
 - Contact impedance: 0.5 mΩ Max
 - Fire rating of plastic shell: UL94V-O
 - Mechanical life: no-load plugging and unplugging > 10000
 - Waterproof grade: IP55 (after plugging)
 - Housing: Thermoplastic
 - Conductor: Copper alloy, silver plated
 - Working environment temperature: -30°C ~ +50°C
 - Wire length: 5m ± 20mm